



Datasheet

# ProductMatch™



68 Bridge, St. Suite 307  
Suffield, CT 06708



+1 888-779-6578



Sales@DataLadder.com



www.DataLadder.com

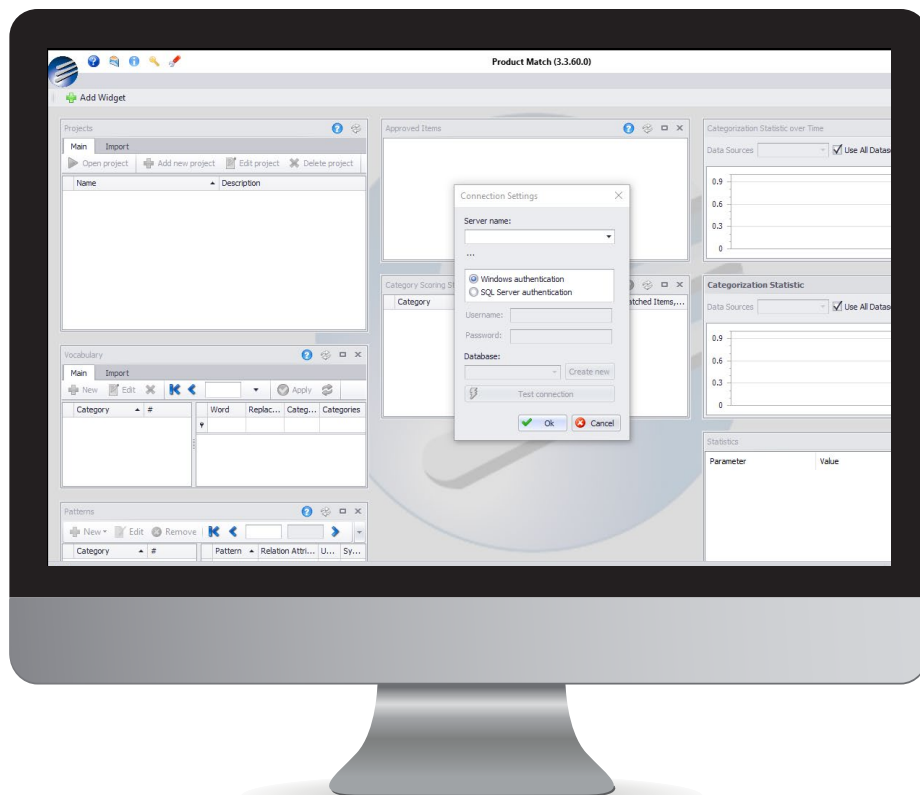
# ProductMatch™

## Leading Technology for Product Data Quality

How do you manage large amounts of unstructured data and make sense of it all? Many marketing and operations managers are challenged to find the right tool that deals with unstructured, varied data. Product data covers many categories, each of which has a different semantic definition. A different approach is required to sort through the many variations.

What happens when your system is loaded with data in the incorrect format? Reports will be inaccurate, items will be hard to locate, and customers will be lost. With much of the software available in today's market typically dealing with structured data, we saw a void in the market for dealing with unstructured, varied data.


There is becoming more of a need for usable data. Product data is oftentimes the common issue in problem with usability, because it needs to be standardized and localized.

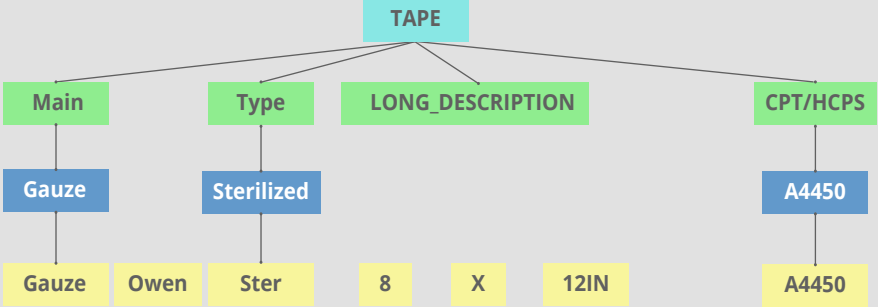


## How it Works

Raw Data	SKU	Source	#....	Category	Score	Hyp...
PREP SOLUTION PVP IODINE 80Z A4246	156770	Sheet2\$	1	SOLUTION	100%	<a href="#">Goo...</a>
PVP-I SCRUB SOLUTION, 4 OZ 7.5% POVIDONE, U.S.P. A4247	143417	Sheet2\$	1	WIPE	50%	<a href="#">Goo...</a>
GAUZE OWEN STER 8 X 12IN A4450	173274	Sheet2\$	1	TAPE	75%	<a href="#">Goo...</a>
WIRE KIRSHNER 2.0MM DIA 13 3/4IN SPADE/FLAT STAINLESS STEEL A4649	147263	Sheet2\$	1	SURGICAL	50%	<a href="#">Goo...</a>
DRESSING HYDROCOLLOID 4X 4IN A6234	173252	Sheet2\$	1	DRESSING	50%	<a href="#">Goo...</a>
BAKER 5CC JEJUNOSTOMY KIT B4087	183896	Sheet2\$	1	NONSURGICAL	50%	<a href="#">Goo...</a>


**Definition:**



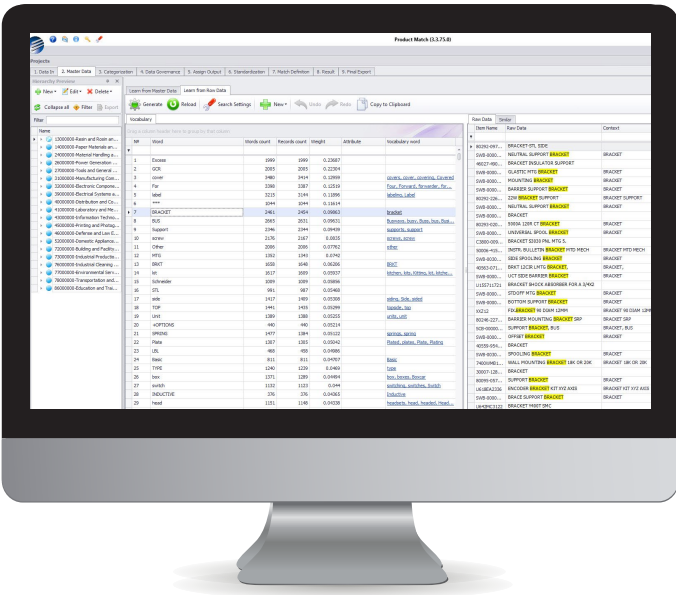
Hide Unrelated

```

graph TD
    TAPE[TAPE] --> Main[Main]
    TAPE --> Type[Type]
    TAPE --> LONG_DESCRIPTION[LONG_DESCRIPTION]
    TAPE --> CPT_HCPS[CPT/HCPS]
    Main --> Gauze[GAUZE]
    Type --> Sterilized[STERILIZED]
    CPT_HCPS --> A4450[A4450]
    Gauze --> Gauze_L[Gauze]
    Gauze --> Owen_L[Owen]
    Sterilized --> Ster_L[Ster]
    LONG_DESCRIPTION --> 8_L[8]
    LONG_DESCRIPTION --> X_L[X]
    LONG_DESCRIPTION --> 12IN_L[12IN]
    A4450 --> A4450_L[A4450]
  
```

ProductMatch™ helps you make sense of unstructured product data in a visual, highly intuitive manner. Using artificial intelligence for effective product matching and data extraction, ProductMatch™ can recognize and transform complex product data from disparate sources. The platform is specifically designed to uncover hidden relationships, learn from past experiences with machine learning, and create hierarchical categorization on top of unstructured data. The end result is a clean and consistent view of your product data that helps enhance operational efficiencies, improve customer experience, and maximize sales.

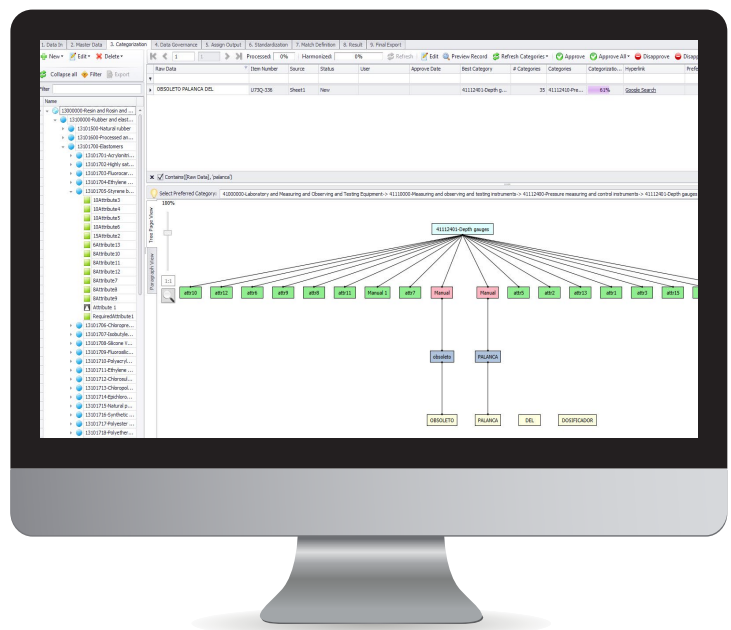
# Making Human Decisions at Computer Speed



Product data has ever been the bane of data quality platforms, requiring manual effort to accurately make sense and bring structure to it. With ProductMatch™, experience human decisions at computer speed. Data Ladder's advanced semantic recognition technology processes product data at lightning speeds from disparate data sources, understands its context, and makes your decisions for you by accurately matching, categorizing, and naturally deriving complex product hierarchies – all on its own. From cleanup to consolidation, ProductMatch™ will get your data right.

## Data Cleansing Done Right

Perfect for those working in distribution, manufacturing, retailing, and sourcing, ProductMatch™ simplifies the job of knowledge workers dealing with attribute-rich data. Import attributes and categories at scale, and let our software derive complex hierarchies and categorize unstandardized product data automatically. With our advanced pattern builder and language translation features, you can create patterns visually to search and parse out any unstructured data with ease. Product data that is usable will improve operational efficiencies to maximize sales and provide a better experience for customers.



## Automate Complex Classifications



From medical coding standards like ICD-10 to global products and services classifications systems like UNSPSC, ProductMatch™ helps make sense of unstructured data by applying context to it using our world-class semantic technology. The software automatically derives hierarchies by identifying parent-child relationships in your data, matching codes accurately and efficiently, and processing massive amounts of information quickly. Group your data in as many levels as you want with our unmatched matching capabilities, and create complex, multitiered classifications with ease.

## Affordable and Easy to Use

ProductMatch™ costs 90% less than comparable solutions and is easy to use for the first-time user unfamiliar with data quality tools. Whether you're a marketing director piecing together market research data for a product launch, or a catalog manager maintaining large volumes of product data, ProductMatch™ offers seamless integration and management of the most intricate data. Automate the creation of reliable data for businesses with Data Ladder's semantic technology that translates unstructured data into standardized information for use across the enterprise.

	ProductMatch™	Other Systems
Machine learning from current master files with semantic recognition	✓	✓
Modern visual interface with 10% improvement to attribute extraction productivity	✓	
Initial training time needed	4 Hours	2 Weeks +
Advanced pattern builder designed for ease of use	✓	
Dedicated account manager and support specialist	✓	Ticketing System
Cost	80% lower than other systems	



Costing 80 percent less than comparable systems, ProductMatch™ provides both value and ease for users. Initial training time required is just four hours, as compared to a two week training period for other platforms. The latest version also gives clients the ability to deduplicate and match millions of records.

ProductMatch™ meets the needs of today's client, with updates including:

- ✓ Improved multi-user management
- ✓ New and improved dashboard
- ✓ Ability to manage multiple projects
- ✓ Ability to import/export the entire project
- ✓ New paragraph view available
- ✓ Ability to share rules
- ✓ Major performance enhancements for larger data sets



ERP



Website



In-Store



Catalog

Samsung 1080i  
Wi-Fi 32" LCD  
#2589-1

LCD 32 Inches Wifi  
Sam 240 Hz

240 Hz Black WF  
LCD

Wi-Fi 1080i Samsung  
240Hz Black

PM



=

Specs Search

Samsung 1080i Black 240 Hz Wi-Fi TV

Standardized Data

Display Size	32 Inches
Display Type	LCD
Resolution	1080i
Brand	Samsung
Refresh Rate	240 Hz
Color	Black
Features	Wi-Fi
Model	2589-1

**Result:** A single source of truth



**Data Ladder**  
Get the most out of your data

ProductMatch™ uses semantic and machine learning technology to recognize and standardize difficult and complex product data from multiple sources. Our contextual recognition tools enable the user to integrate data more efficiently. From cleanup to consolidation, ProductMatch™ will get your data right.

Disparate Sources

## Benefits

Suitable for a small or medium sized organization, ProductMatch™ offers numerous benefits for the user:

- ✓ Transforms complex and unstructured data
- ✓ Customized dashboard provides easy to use widgets for client personalization
- ✓ Machine learning capabilities overcome the traditional limitations of data quality
- ✓ Find and define hierarchical relationships
- ✓ Enriches data with attributes and classifications
- ✓ Custom output function allows client to define how data is viewed
- ✓ Ideal for product classification (UNSPSC, tariff codes, etc)
- ✓ Create product cross references to improve competitive intelligence
- ✓ Increases revenue and improves customer satisfaction

Perfect for those working in distribution, manufacturing, retailing, and sourcing, ProductMatch™ helps those who work with attribute-rich data. Whether its search term parsing or language translation, product data that is usable will improve operational efficiencies to maximize sales and provide a better experience for customers.



"We liked the ability of the product to categorize the data in the way that we need it, and its versatility in doing that."

Adrian  
Senior Product Manager



## Benefits



One distributor was able to see an 80 percent reduction in use of outsourced services, saving nearly \$975,000.



A manufacturer was able to save a significant amount of time by realizing a match rate of 95 percent in less than one hour.



One major organization had undergone an M&A, and was able to reduce the number of parts records in their inventory from 650,000 to 55,000.



An electronics distributor realized an 18 percent increase in online conversions by improving product categorization and standardization.



## Our Customers





# ABOUT US

Data Ladder is a data quality software company dedicated to helping business users get the most out of their data through data matching, profiling, deduplication, and enrichment tools. Whether it's matching millions of records through our fuzzy matching algorithms, or transforming complex product data through semantic technology, Data Ladder's data quality tools provide a superior level of service unmatched in the industry.

## Why Data Ladder

It's simple: Intuitively make sense of complex, unstructured product data with advanced contextual recognition and machine learning capabilities. With ProductMatch™, automating product data standardization, attribute extraction, and classification is easy.

[Free Download](#)